



Department of Parks and Recreation  
Department of General Services

Providing the District's children and adults with exciting, innovative, and inclusive play spaces.

# Meeting Agenda

---

1. Project Process Review
2. Analysis Review
  - a) Site Use Analysis
  - b) Site Use Exchange
  - c) Community input result
3. Final Concept Plan Overview
4. Final Concept Analysis
  - a) Functional Space Diagram- Organizing Elements
  - b) Use Diagram- Community Input Integration
  - c) Vegetation Diagram
5. Final Concept Features
6. Proposed Play Equipment
7. Moving Forward (Timeline and Schedule)
8. Questions



# PROJECT --- PROCESS REVIEW

**ANALYSIS**

---

**REVIEW**



## Site Use Analysis

### Recreation Center

- Parking is underutilized by Rec Center, currently parking SWS faculty
- Tot Program has no playground

### School Within School

- Insufficient parking
- Playground is old, under-sized

Rec Center Parking

Under-designed playground for SWS



## Proposed Site Use

- Excess Rec Center Parking becomes new playground
- Under-designed SWS playground becomes parking
- DPR playground may be utilized by SWS during school hours

New Rec Center Playground

SWS Parking Expansion

## Community Input- what we heard:

- Mound concept preferred
- Desire for more natural experiences
- Desire for more open play space
- Opportunity to interact with water
- Would like the SWS entrance to feel special
- Would rather have open play space than adult exercise equipment



# **FINAL CONCEPT**

---

# **PLAN OVERVIEW**





## Concept Plan

- Mound enhanced with “moguls” for added interest and challenge
- Planting edge expanded for more natural elements
- Rain garden area enlarged and enhanced with dry creek bed and stepping stones to invite interaction
- Older swings removed to allow for open play area with playhouse
- Smaller playhouse added for younger children
- School entrance enhanced with color and threshold
- Added educational opportunities for wildlife viewing, native plants, seasonal change
- Adult exercise equipment removed



Site Overview

SWS

SWS Parking

Rec Center  
Parking

Rec Center  
Track





Meadow Walk



Play Mound  
Play Mound





2-5 Year Area



Rain Garden







# **FINAL CONCEPT**

---

# **ANALYSIS**



## Functional Space Diagram



**PRIMARY ACCESS**



**SECONDARY ACCESS**



**TRIKE TRACK**

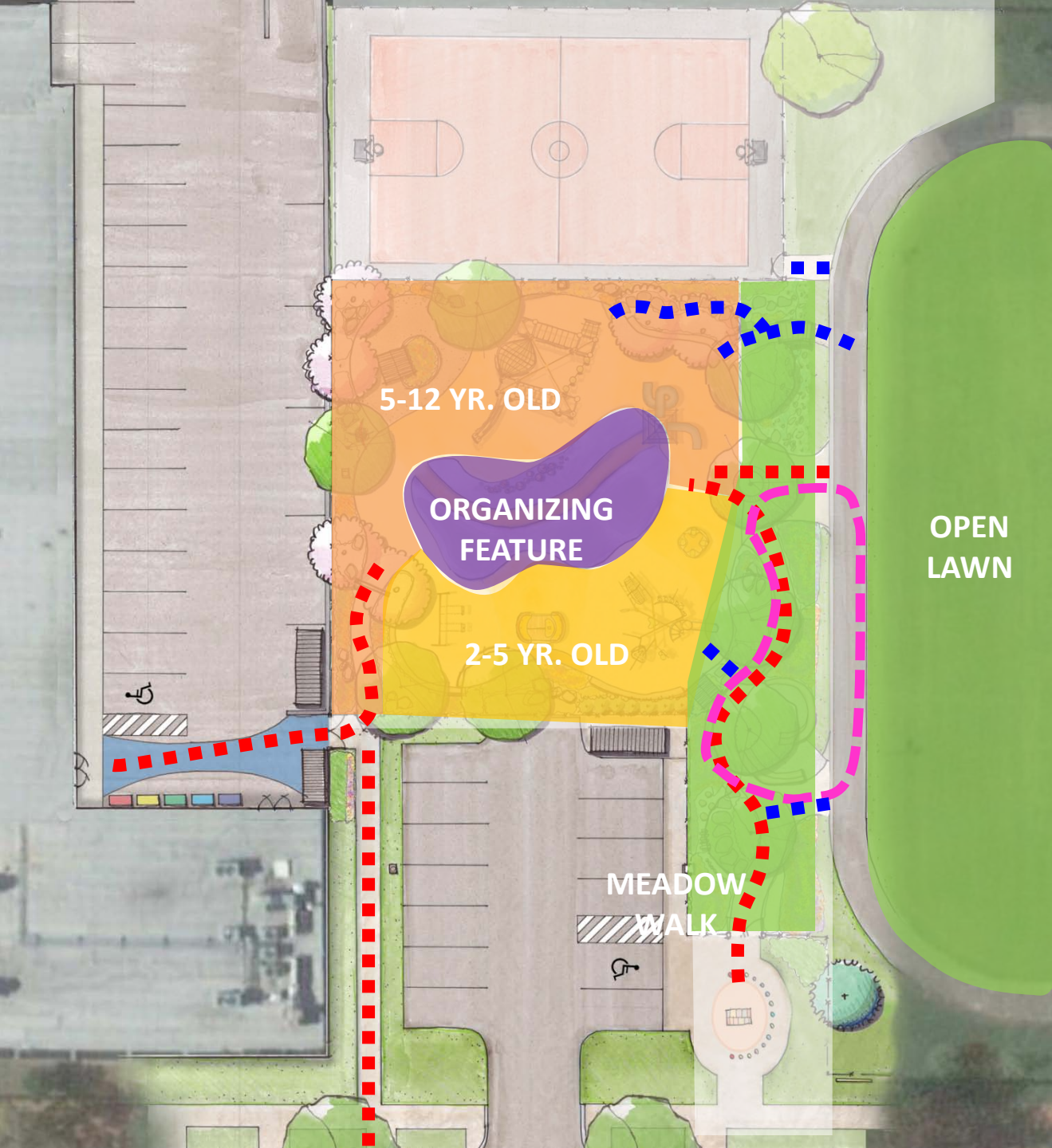
5-12 YR. OLD

ORGANIZING  
FEATURE

2-5 YR. OLD

OPEN  
LAWN

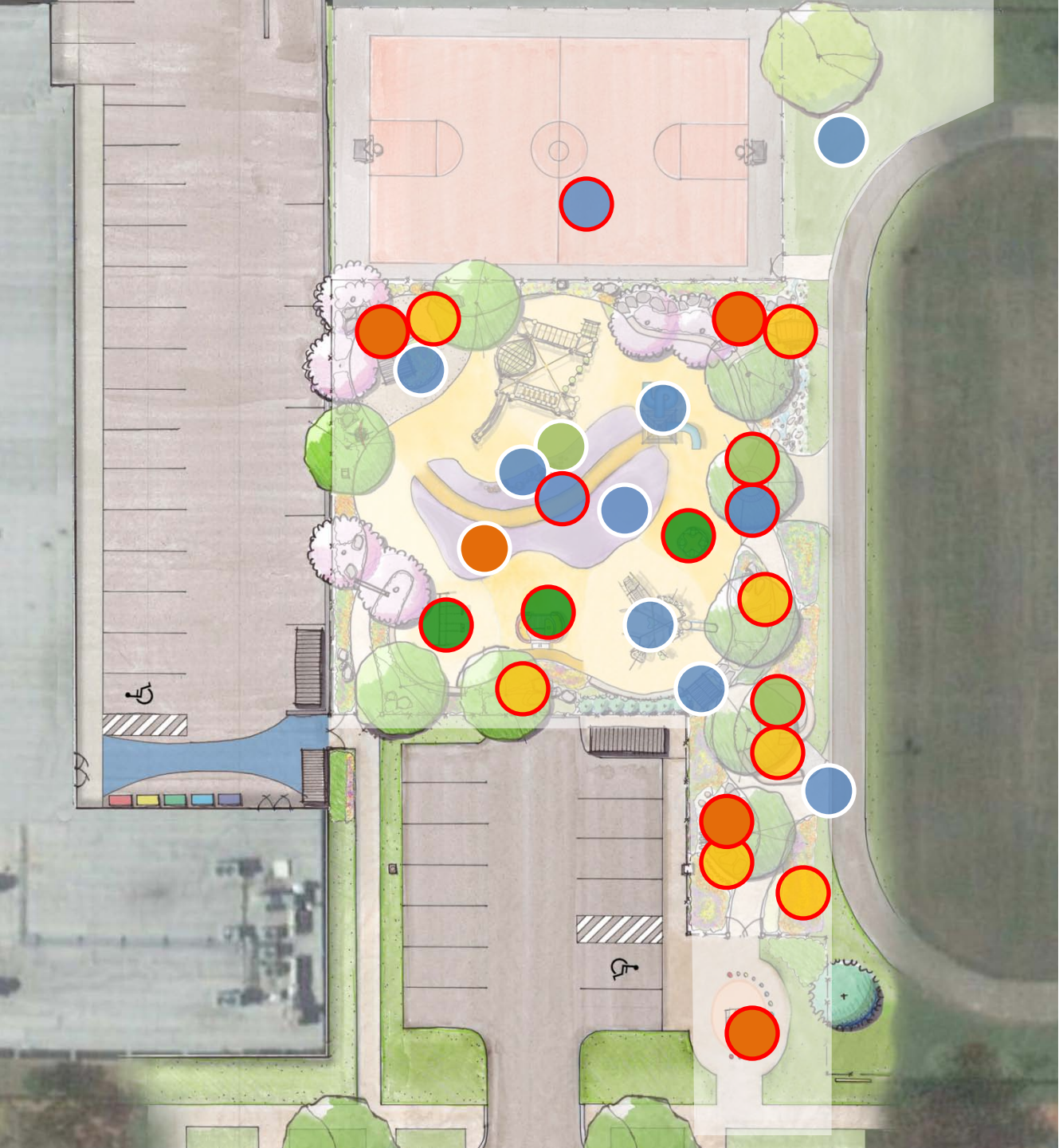
MEADOW  
WALK



## Use Diagram

-  **unstructured play**
-  **swings and motion**
-  **attend a class**
-  **learn about wildlife**
-  **create something**

 **ADA accessible**

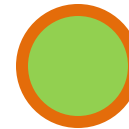




## Vegetation Diagram



Proposed  
Vegetation



Existing Tree



# **FINAL CONCEPT**

---

# **FEATURES**





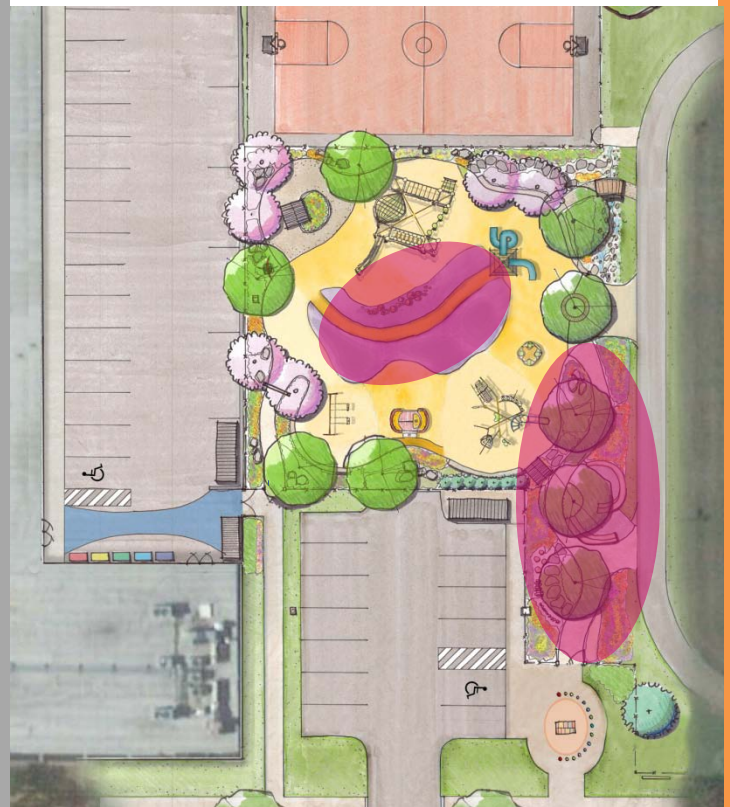
Berms in landscape add mystery and discovery



Play mound provides “choose your own” challenge and accessible play

# Enhanced Play and Experience

- Introduced topography in central mound provides “choose your own” challenge and accessible outlook points
- Berms throughout landscape add a sense of mystery and discovery







Playhouse in natural nook allow for open-ended play



Variety of native plantings adjacent to walkway encourage curiosity and foster wildlife

## Nature Experience

- Native plants with texture, color, scent and seasonal changes
- Material changes with boulders and plant material
- Playhouse for open-ended play within play area
- Wildlife habitat
- Over 50% is natural space

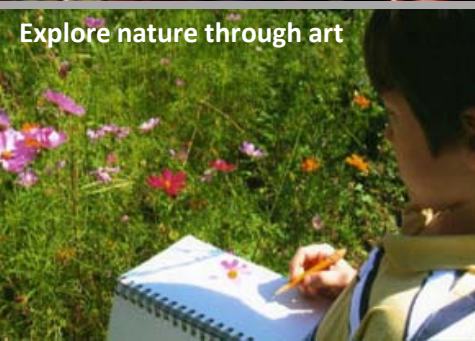
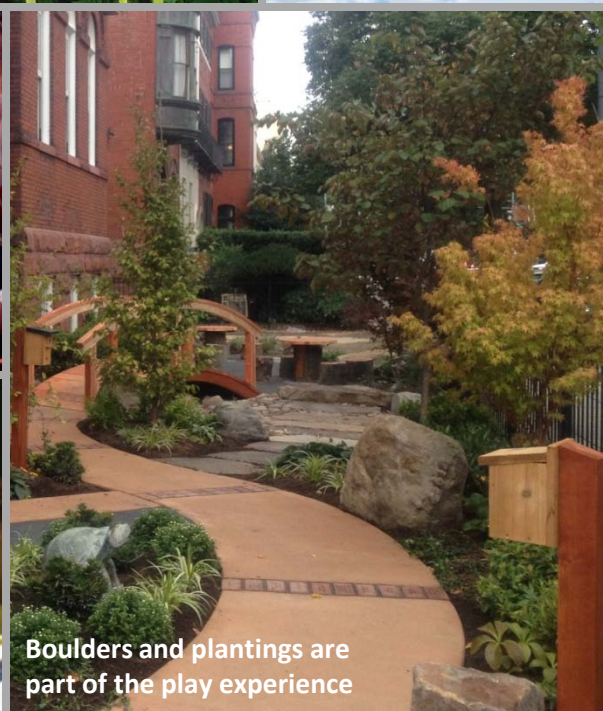






## Nature Experience

- Native plants with texture, color, scent and seasonal changes
- Material changes with boulders and plant material
- Wildlife habitat
- Over 50% is natural space



Weather vane

Plants with texture

Semi-open playhouse

Plants with fun shapes

Plants with seasonal interest

Birdhouses for wildlife attraction

Explore nature together

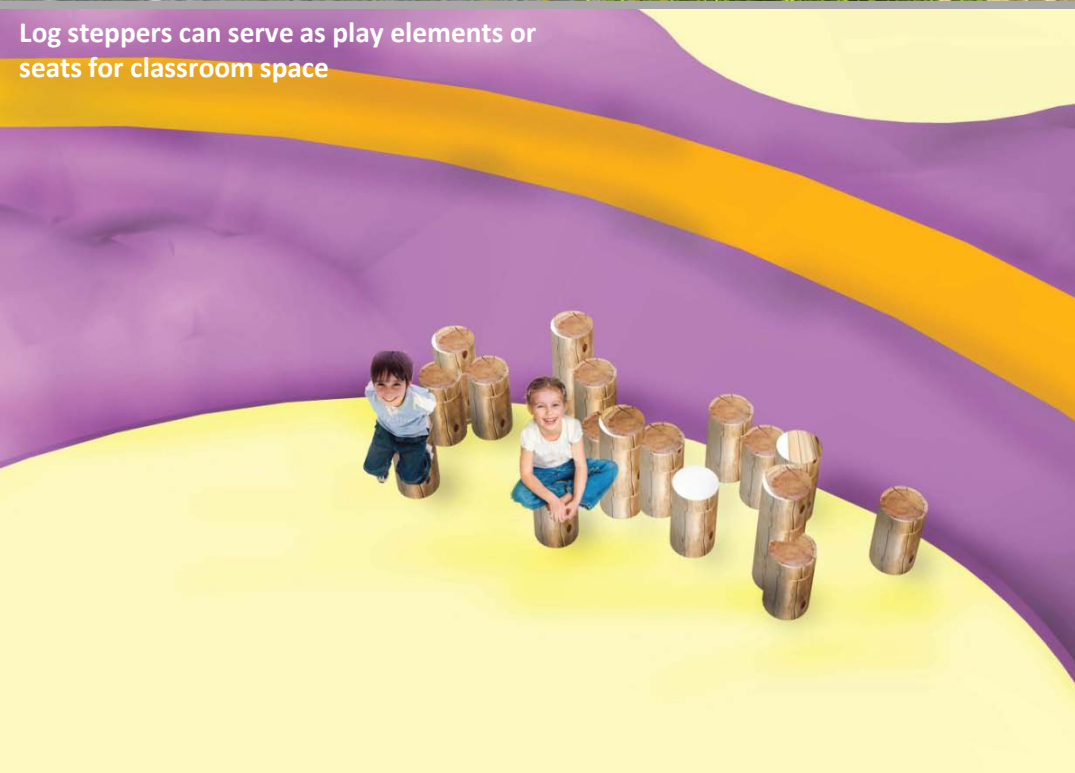
Explore nature through art

Boulders and plantings are part of the play experience





Artful seat walls can serve as informal seating or classroom space



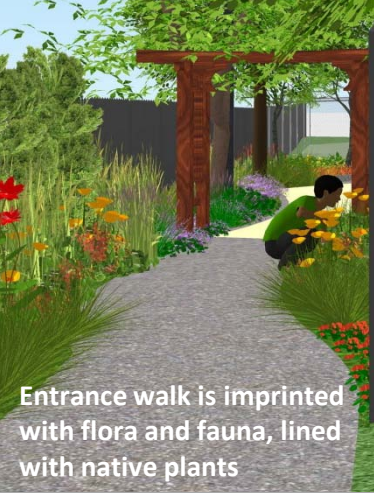
Log steppers can serve as play elements or seats for classroom space

# Outdoor Classrooms

- Multiple options allow for flexibility and availability
- Multifunctional spaces- can be used for other purposes when class is not in session







Entrance walk is imprinted with flora and fauna, lined with native plants



Seat walls are imprinted with flora and fauna



Plant species native to the Anacostia watershed aid education, improve runoff quality



Imprints are discovery for children



Imprints tell the Anacostia story

## Anacostia Story

- Local watershed connection
- Imprints in pavement of native flora and fauna
- Plants include species native to the Anacostia watershed
- Supports school educational programs



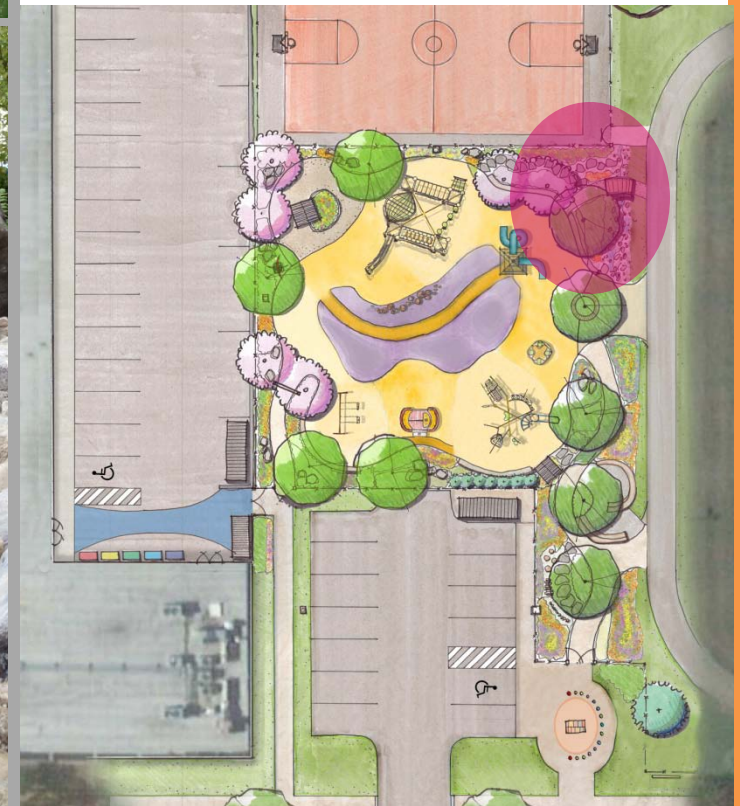


Pathways, bridge and dry creek bed invite access to rain garden; plants cleanse the water and enhance child's experience



## Follow the Rain

- Experiential Rain Garden
- Grading funnels water to single collection point
- Stepping stones invite interaction
- Signage enhances learning opportunity



Boulders and native plants in richly textured rain garden

Dry creek bed stones vary in size





## Sensory Experience

- Plants with texture, color, scent
- Material changes with flagstone and stone dust
- Musical instruments
- Wildlife habitat

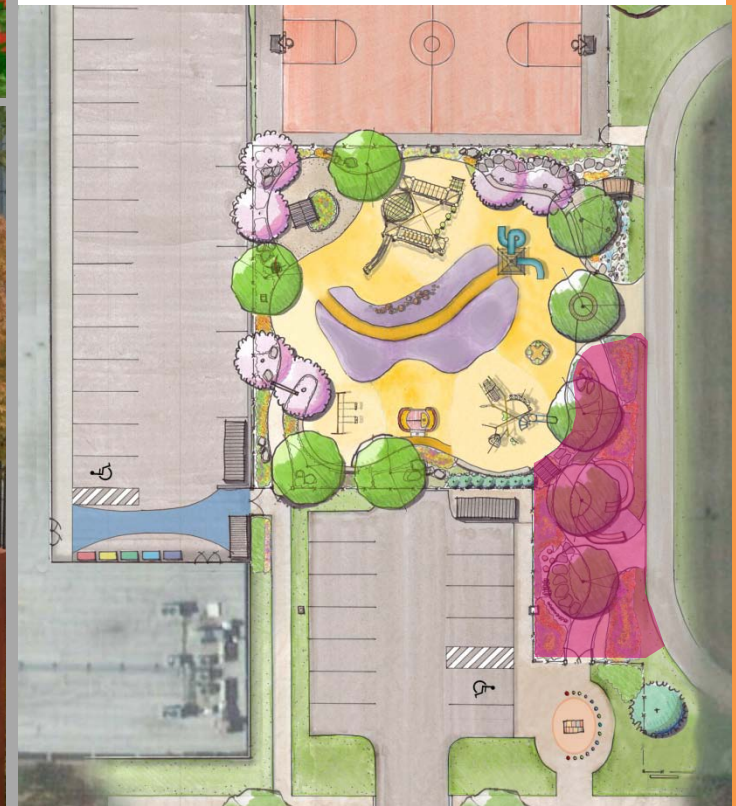
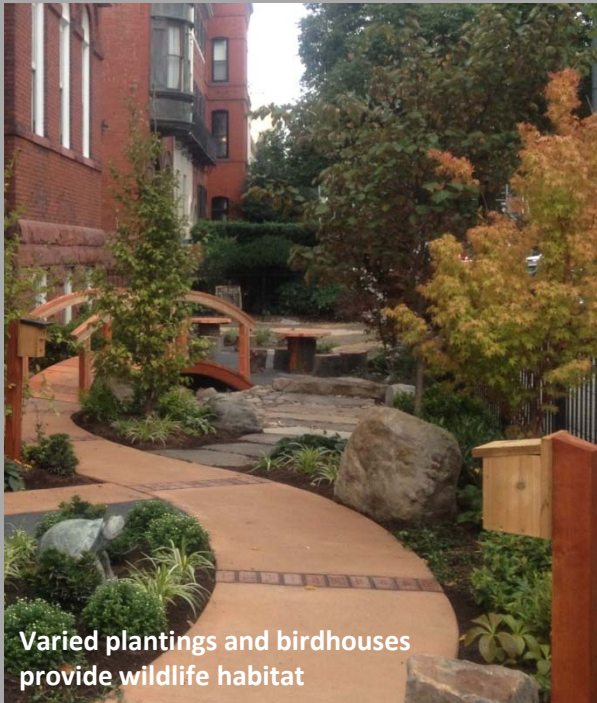






## Sensory Experience

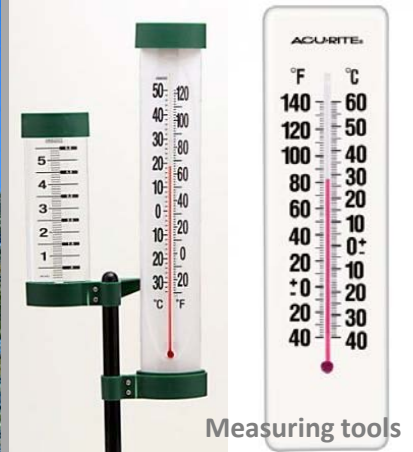
- Plants with texture, color, scent
- Material changes with flagstone and stone dust
- Musical instruments
- Wildlife habitat







Weather vane



Measuring tools



Seasonal changes



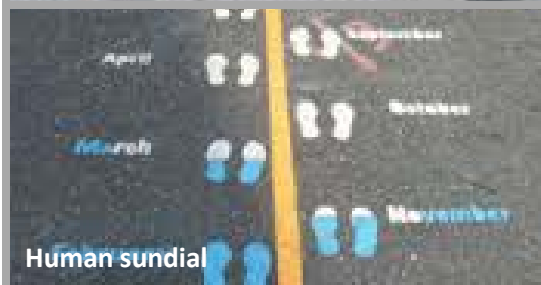
Seasonal changes



Seasonal changes



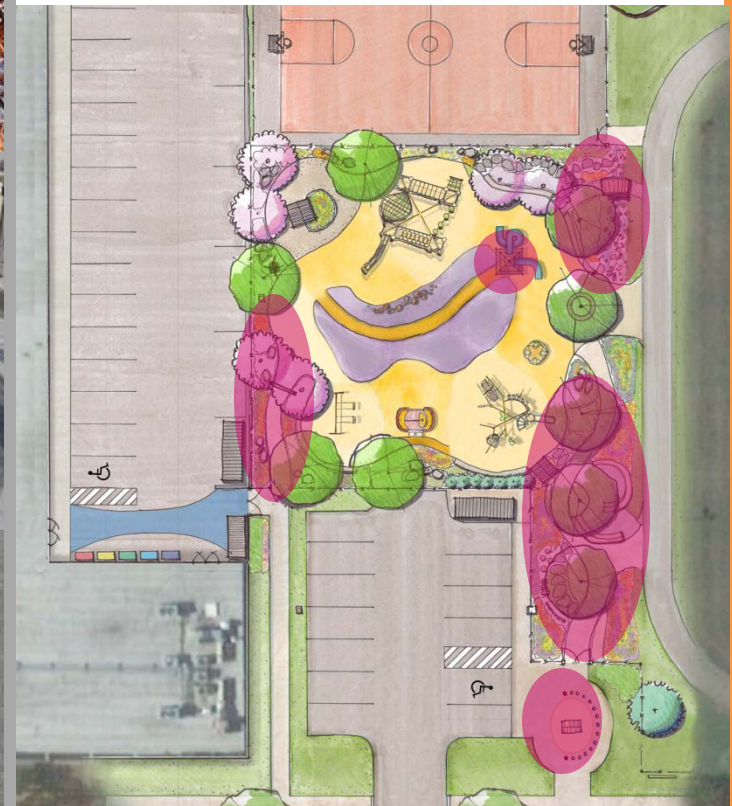
Human sundial



Human sundial

## Seasonal Experience

- Native plants with seasonal variation
- Weather vane
- Human sundial
- Atmospheric measurement tools







## Enhanced School Entrance

- Specialty pavement treatment
- Trike and loose part storage
- Chalkboard for lessons and noting playground observations
- Enhanced native plantings
- Threshold trellis at end of ramp

Enhanced school entrance experience



Outdoor chalkboard



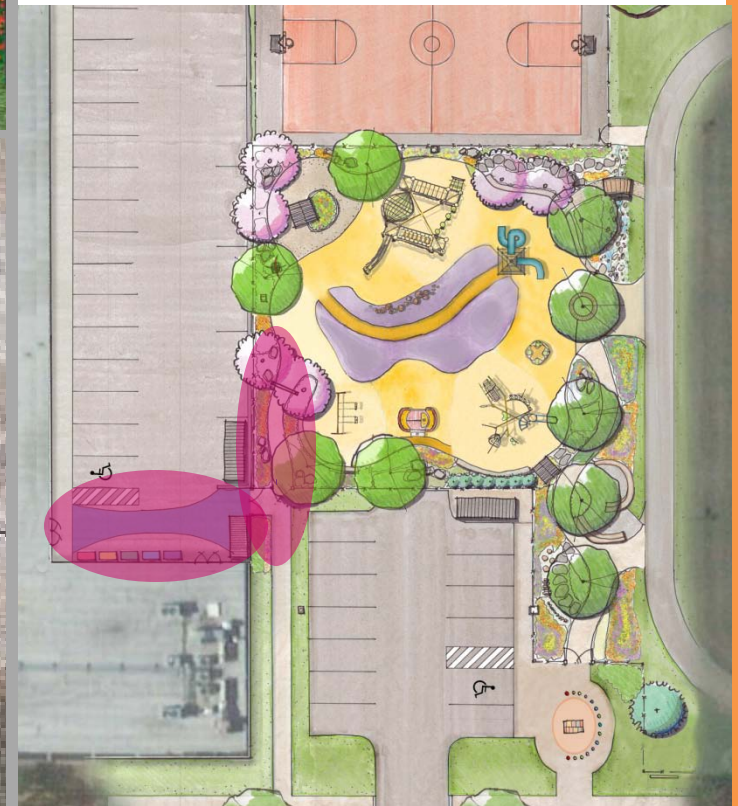
SWS outdoor storage



Pavement enhancements



Imprints of flora and fauna

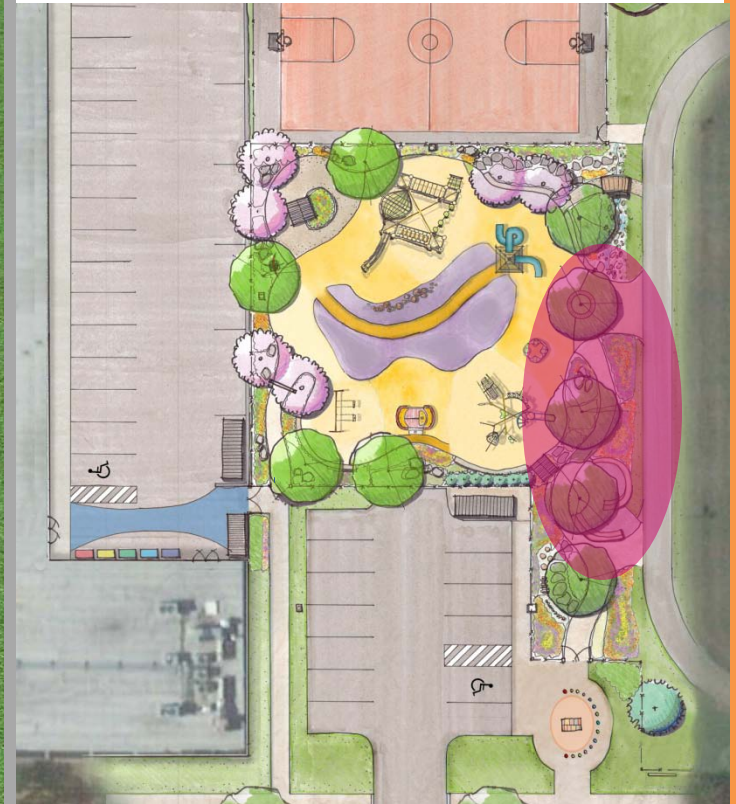






## Tot Trike Track

- Shorter “Inner Loop” for younger children
- Older children may use larger track



Trike track loop





Shade structure



Shade structure

# Extended Use

- Strategically located trees along south and west exposures
- Shade sail structure for mid-day relief



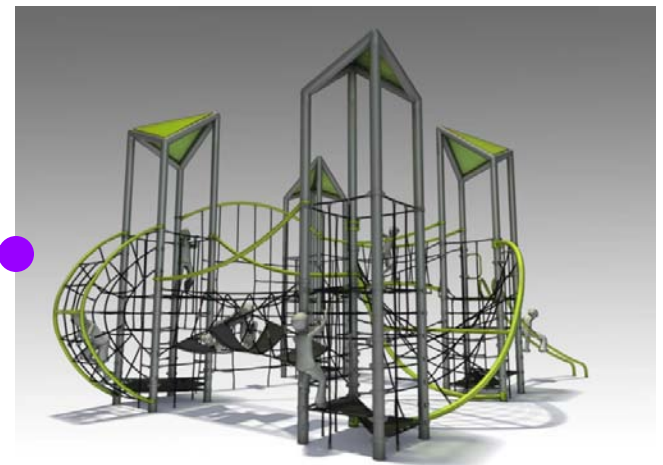
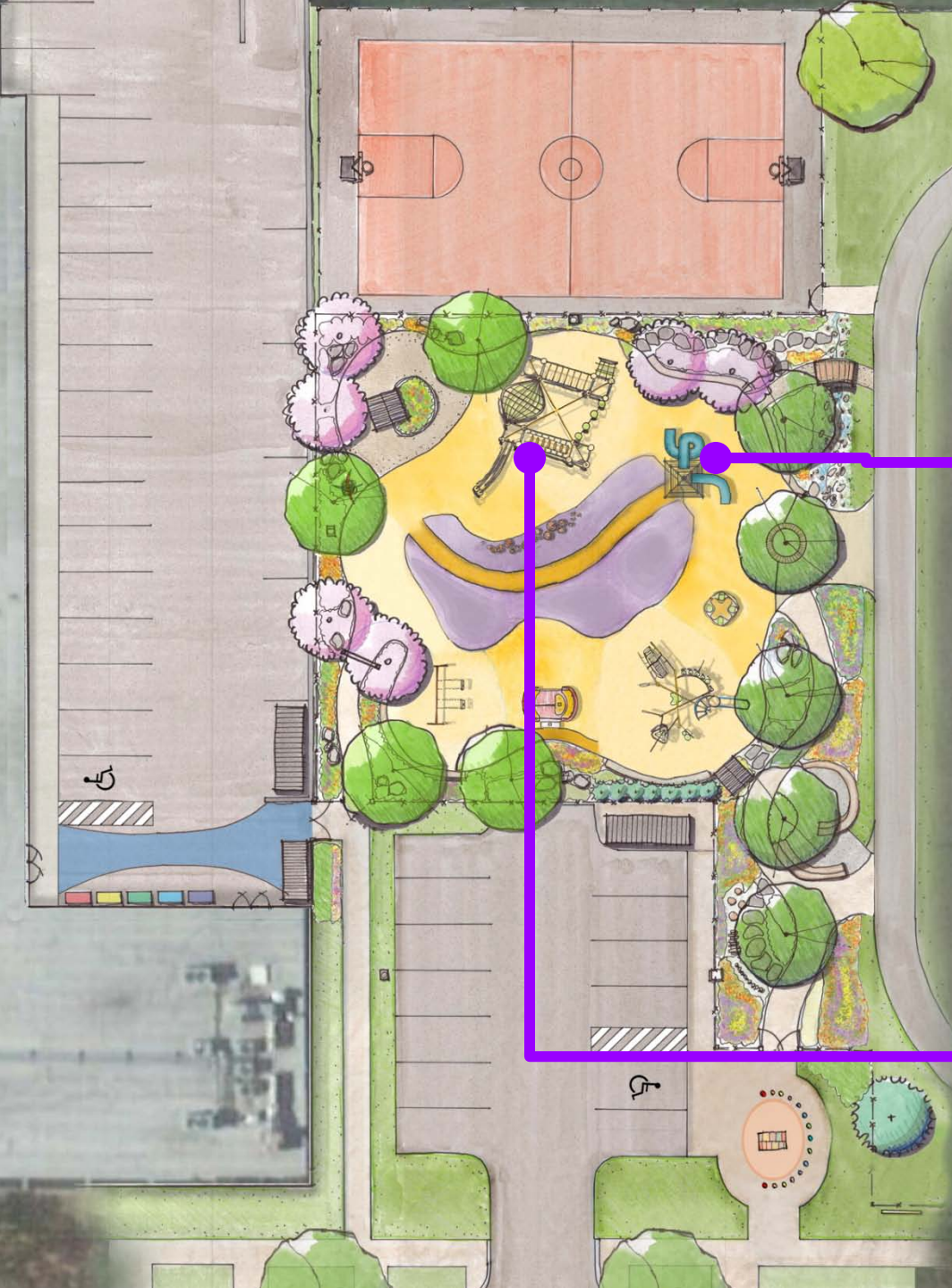
# **PRPROPOSED**

---

# **PLAY EQUIPMENT**

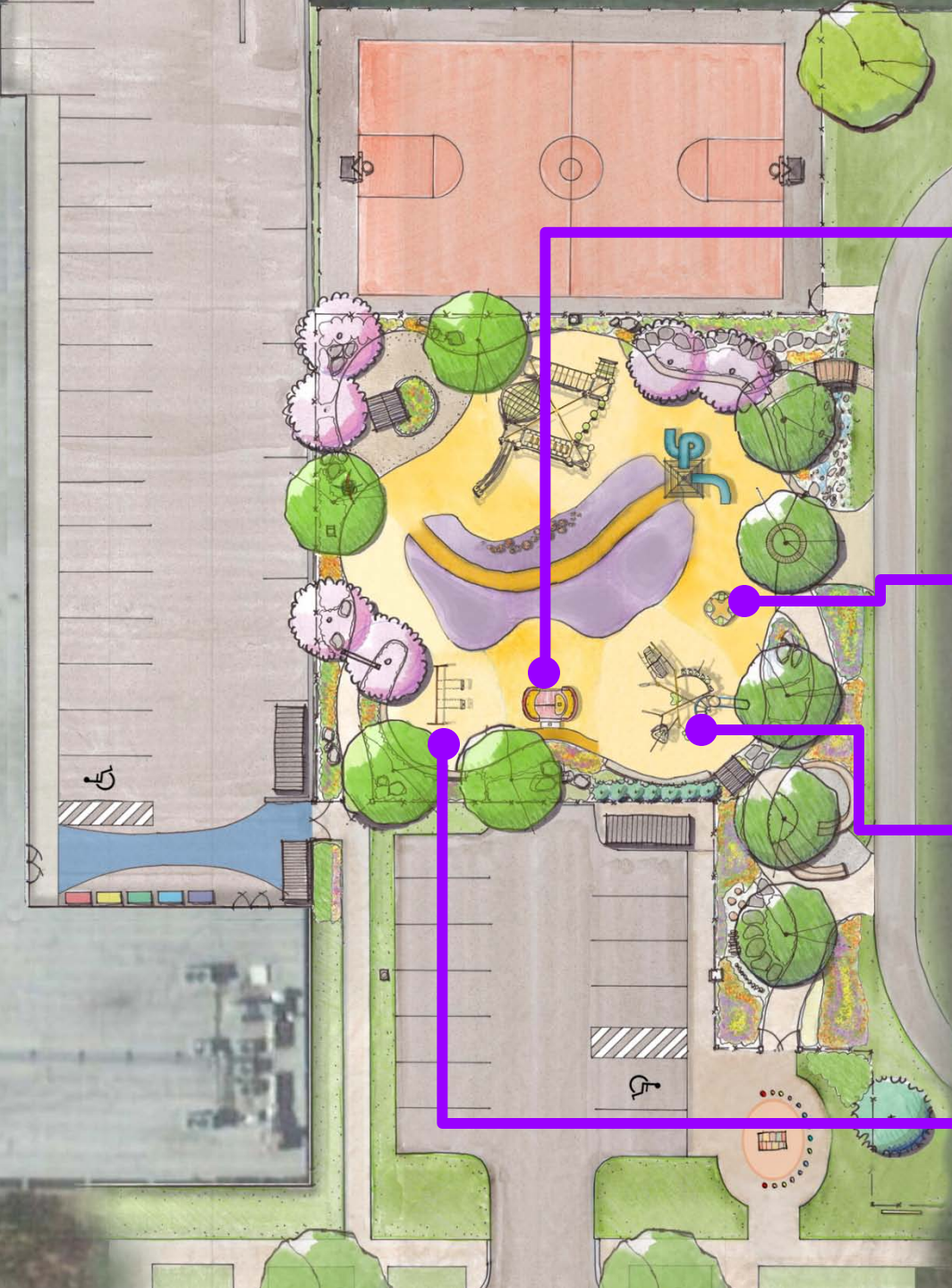


## Proposed Play Equipment



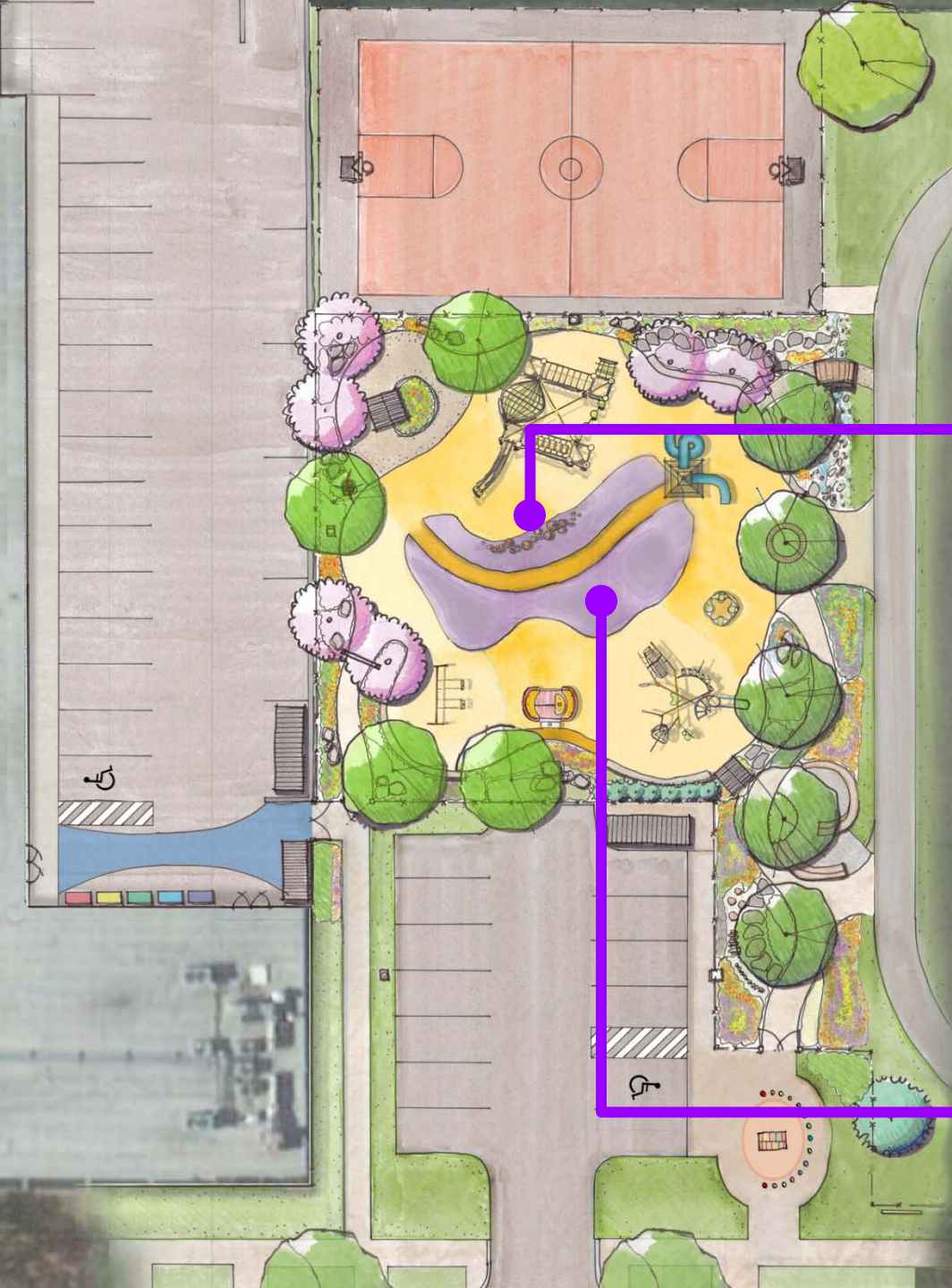


## Proposed Play Equipment





## Proposed Play Equipment







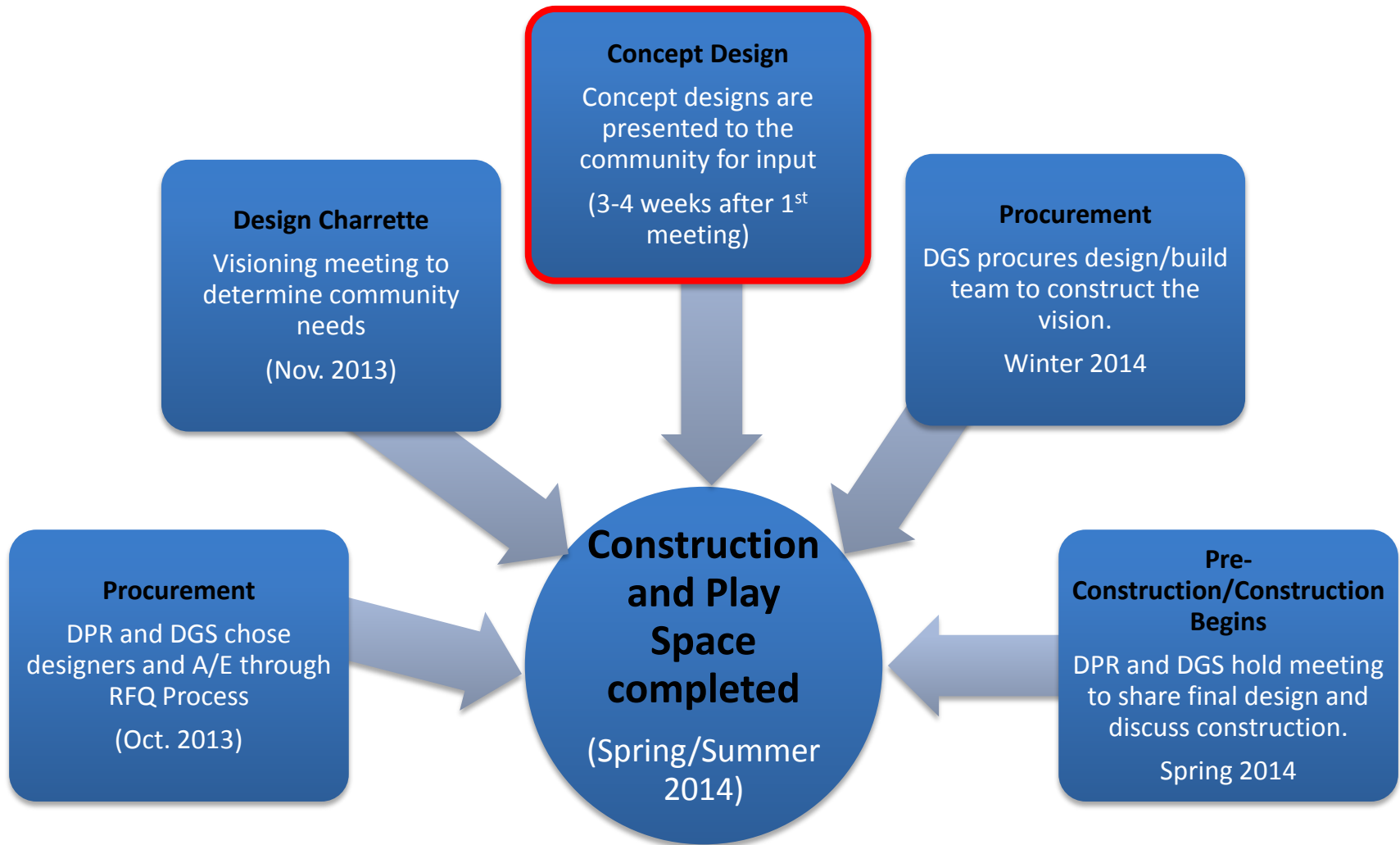
**Come play and explore!**

**MOVING**

---

**FORWARD**

# Timeline/Schedule



**QUESTIONS?**

---