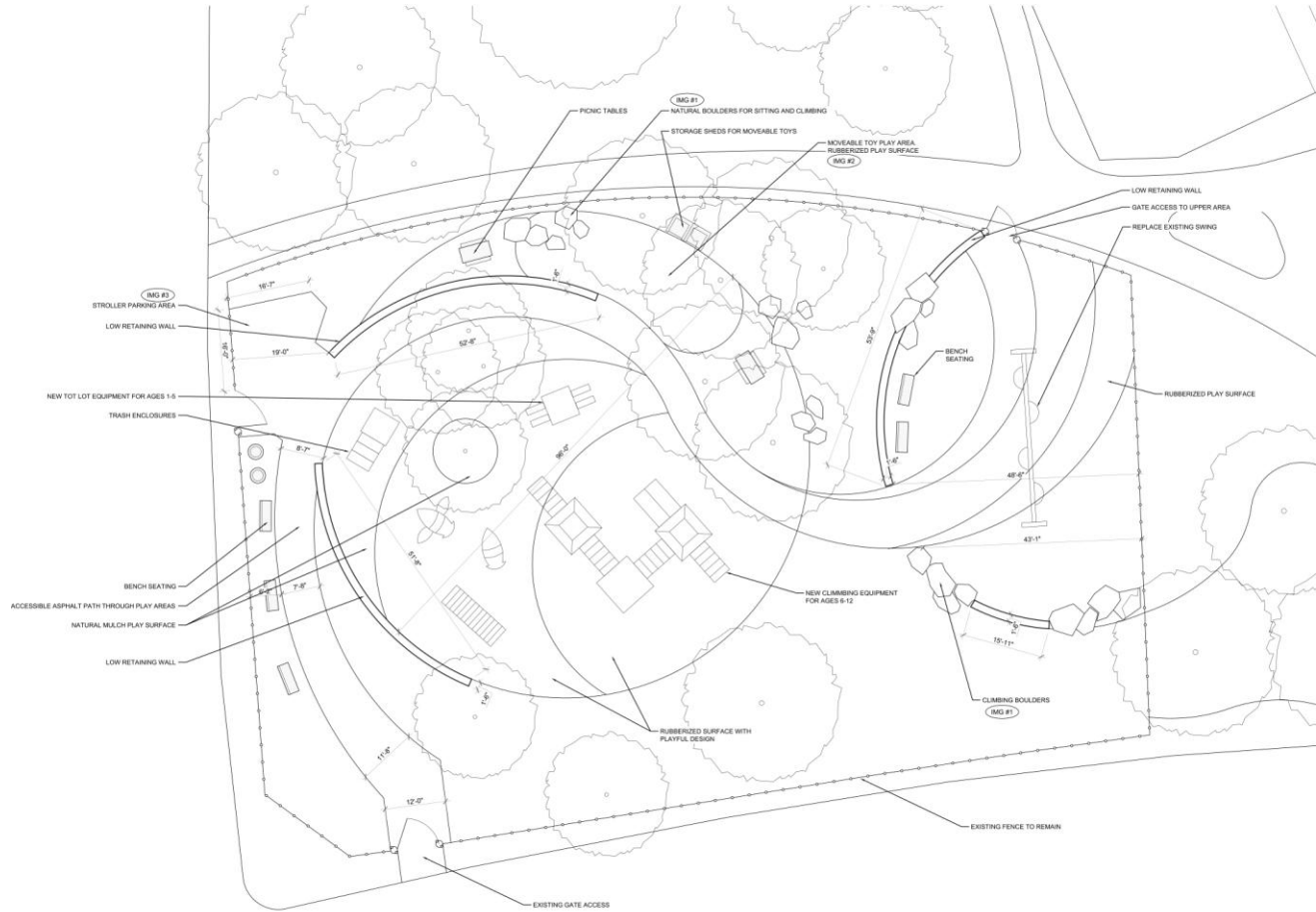




GOVERNMENT OF THE DISTRICT OF COLUMBIA
Department of Parks and Recreation



(MG #1) NATURAL CLIMBING BOULDERS

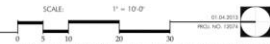


(MG #2) MOVEABLE OUTDOOR TOYS



(MG #3) STROLLER PARKING STATIONS

NOTES:
 1) CONTRACTOR IS RESPONSIBLE FOR FINAL DESIGN OF ALL SITE COMPONENTS
 2) CONTRACTOR TO VERIFY ALL WORK IS IN COMPLIANCE WITH ALL GOVERNING OR APPLICABLE CODES AND ORDINANCES INCLUDING, BUT NOT LIMITED TO THE FOLLOWING: IBC, ADAAG, DISTRICT OF COLUMBIA CODES, CHESTERFARMS BAY WATERSHED INITIATIVE, ETC.
 3) ALL EX. TREES ARE TO REMAIN, EX. TREES ARE SHOWN AT APPROXIMATE LOCATIONS.
 CONTRACTOR TO ENSURE NECESSARY TREE PROTECTION MEASURES AS PER D.C. STANDARDS.



NEWARK WASHINGTON, D.C.

Prepared for DPR by STUDIO39

THIS DOCUMENT IS FOR ILLUSTRATIVE PURPOSES ONLY AND MAY NOT REFLECT ACTUAL QUANTITIES, DIMENSIONS, MATERIALS, OR CONDITIONS.

Move • Grow • Be Green with DPR
 DC DEPARTMENT OF PARKS AND RECREATION

1250 U Street, NW, Washington, DC 20009 • Phone: (202) 673-7647 • Fax: (202) 673-2087 • Web: dpr.dc.gov